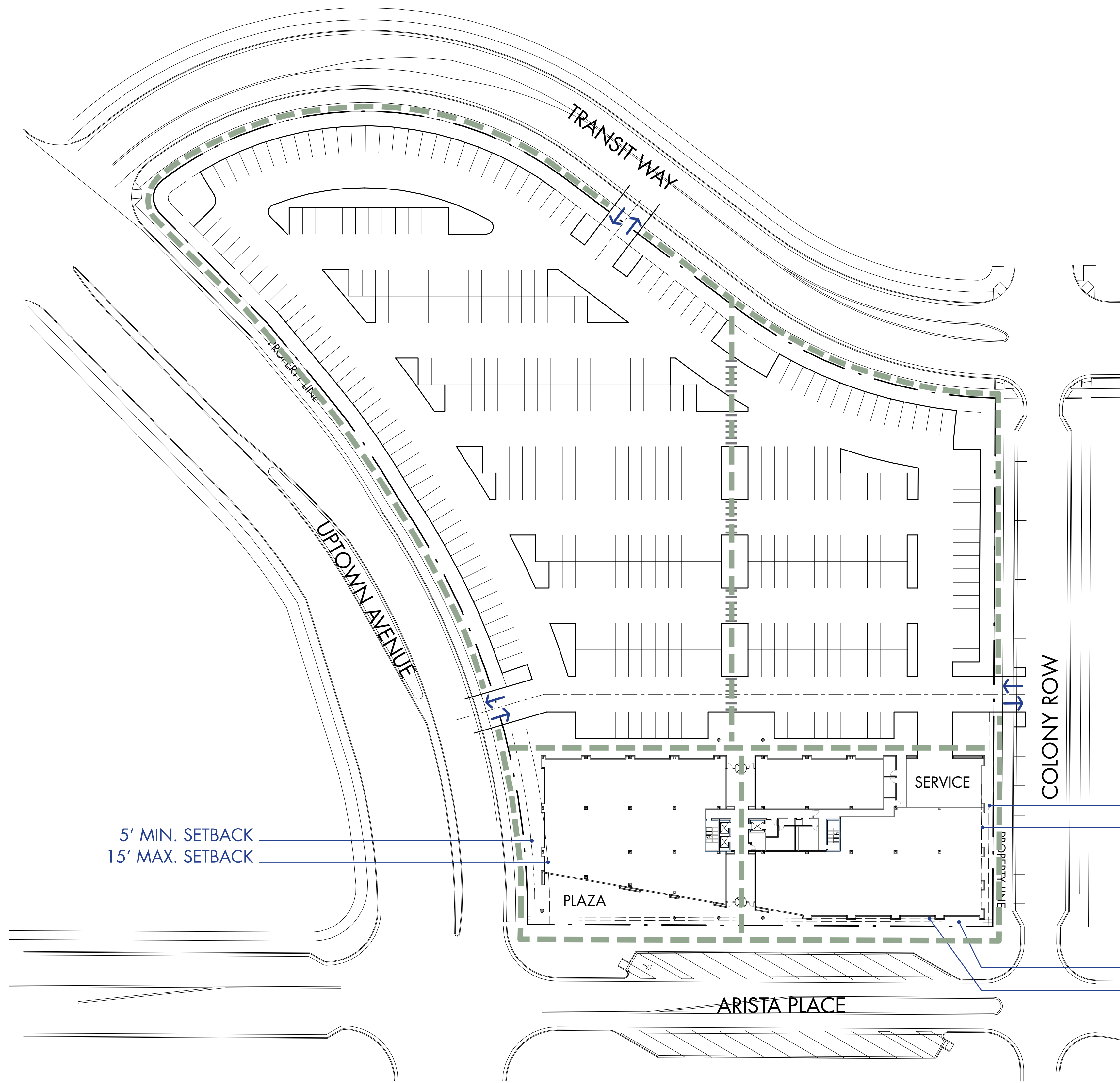




Arista Three Office Building



Parking Statistics

TENANT AREA (FOUR FLOORS)	91,511 USF
PARKING STALLS / ON SITE	360
PARKING STALLS / ADJACENT STREETS	25
TOTAL	385
PARKING RATIO	4.20

↔ VEHICLE ACCESS

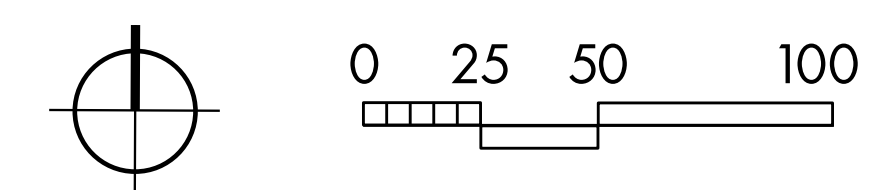
--- PEDESTRIAN ACCESS

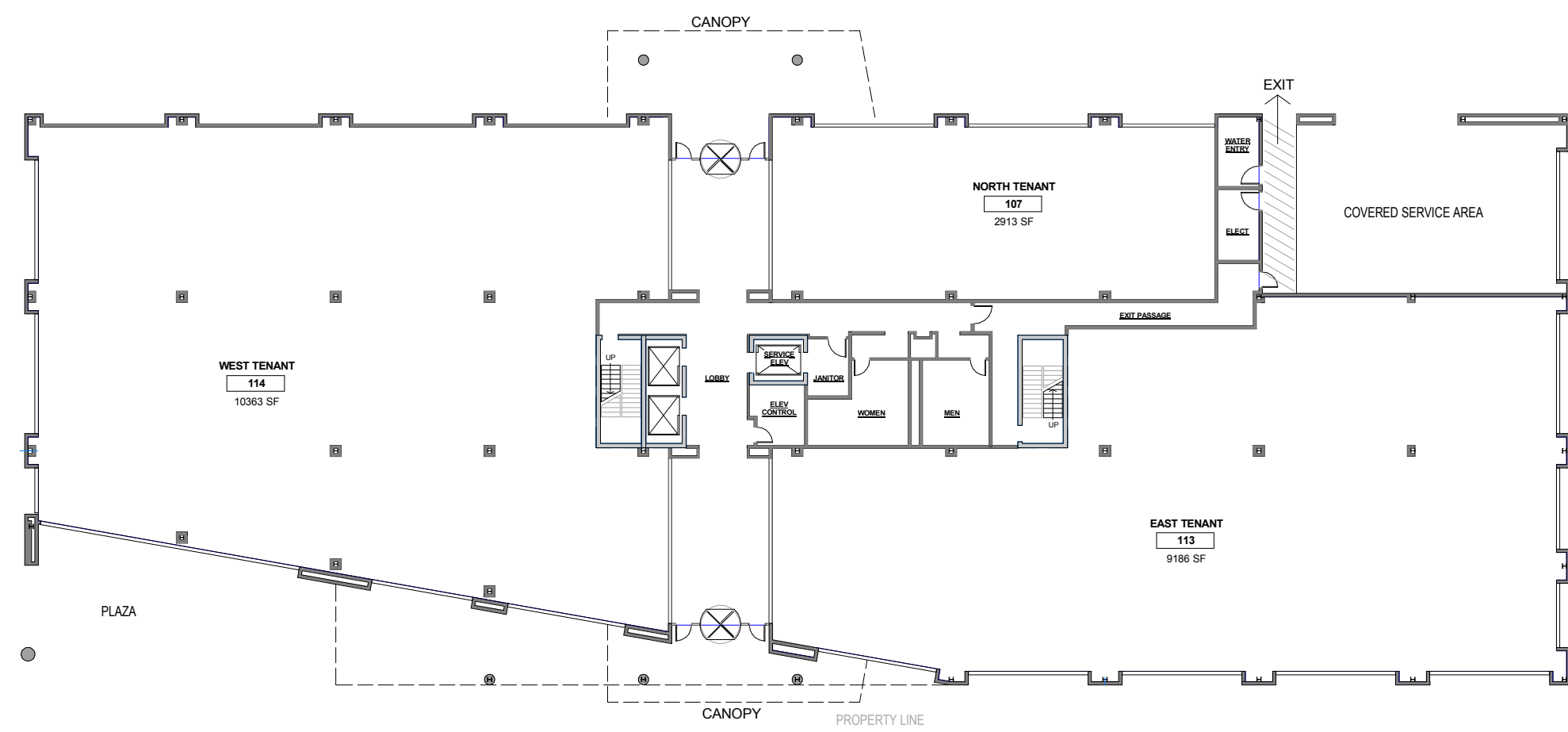
5' MIN. SETBACK
15' MAX. SETBACK

3' MIN. SETBACK
8' MAX. SETBACK

3' MIN. SETBACK
5' MAX. SETBACK

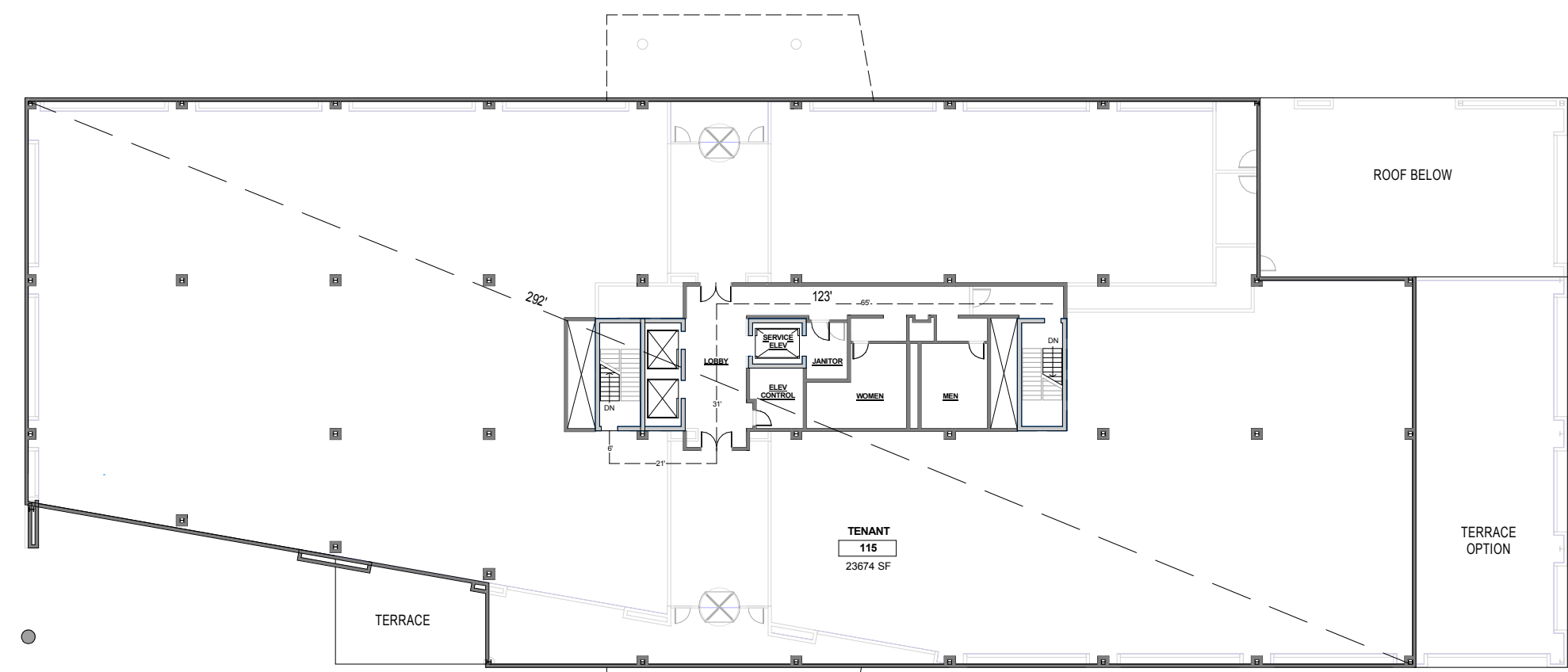
Site Plan





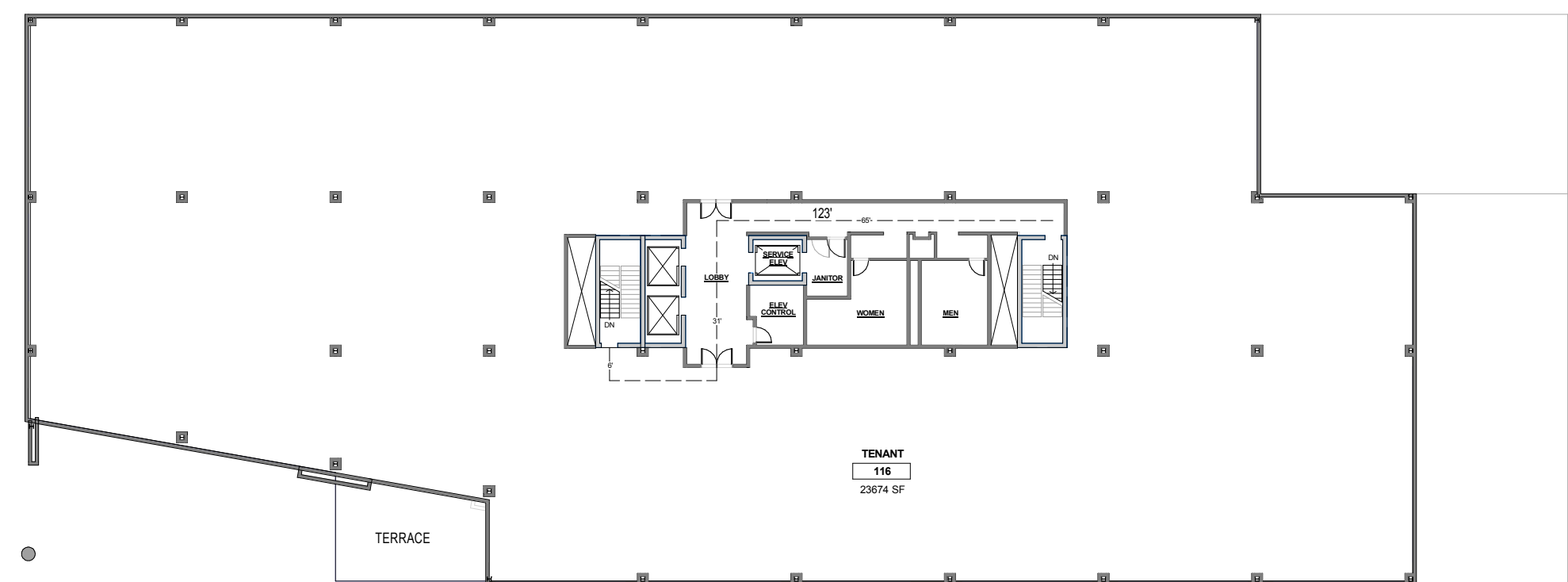
Floor 1

TENANT
CORE / CIRCULATION 22,472 SF
4,555 SF
TOTAL GROSS AREA 27,027 SF



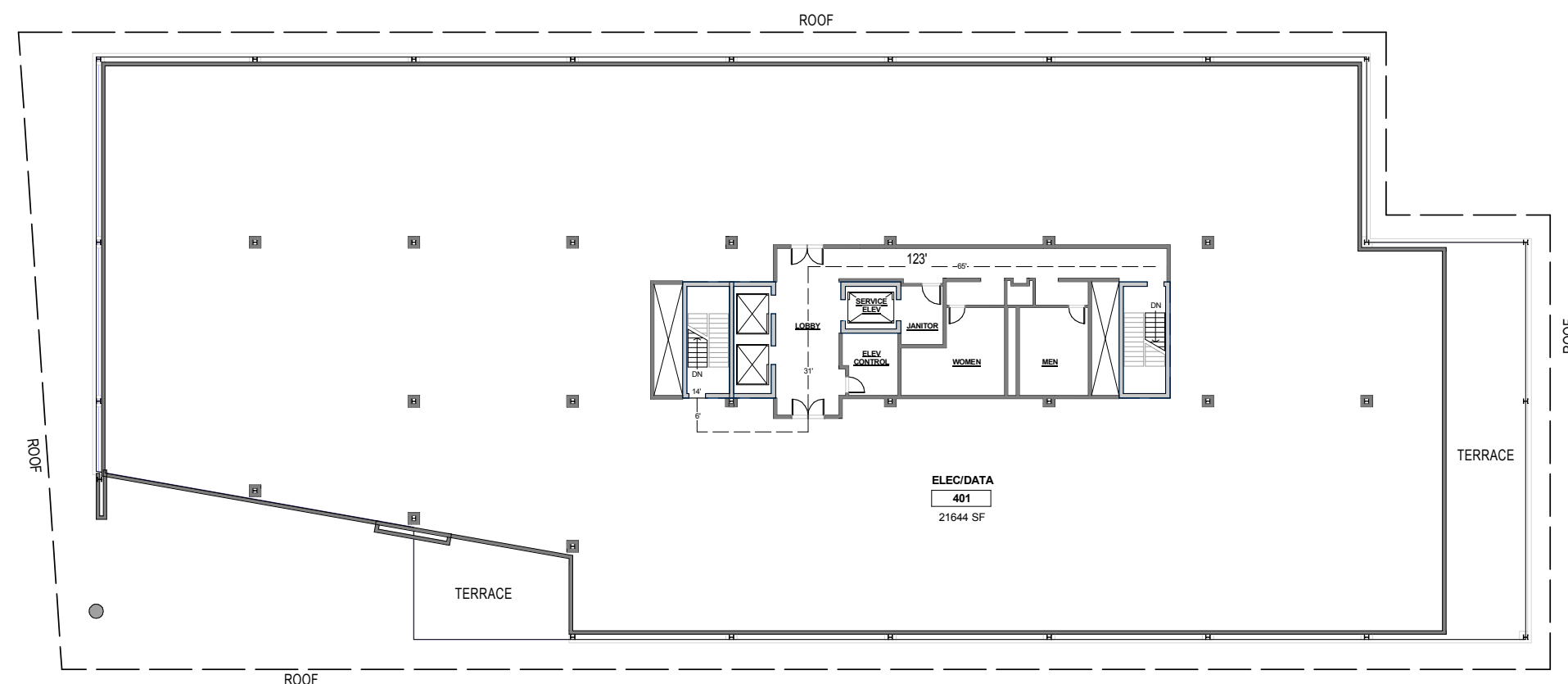
Floor 2

TENANT
CORE / CIRCULATION 23,662 SF
2,866 SF
TOTAL GROSS AREA 24,528 SF



Floor 3

TENANT
CORE / CIRCULATION 23,662 SF
2,866 SF
TOTAL GROSS AREA 24,528 SF



Floor 4

TENANT
CORE / CIRCULATION 21,715 SF
2,735 SF
TOTAL GROSS AREA 24,450 SF

Floor Area Summary

TENANT AREA (FOUR FLOORS)	91,511 USF	87.5%
CORE / CIRCULATION	13,022 SF	12.5%
TOTAL GROSS AREA	104,533 GSF	100%

